



Product Type

Product Type	SAR-100-5/SAR-100-10 (3x400V)
No. of Connection	5/10
Label	 

Introduction

SOLARMAN anti-reflux box enables the real-time monitoring of grid-tied situation through the integration of three-phase meter, logger and CT, which meets the requirement of real-time adjusting inverter output power at power consumption scenario.

Supported data transmission mode: WiFi&Ethernet.

Parameters

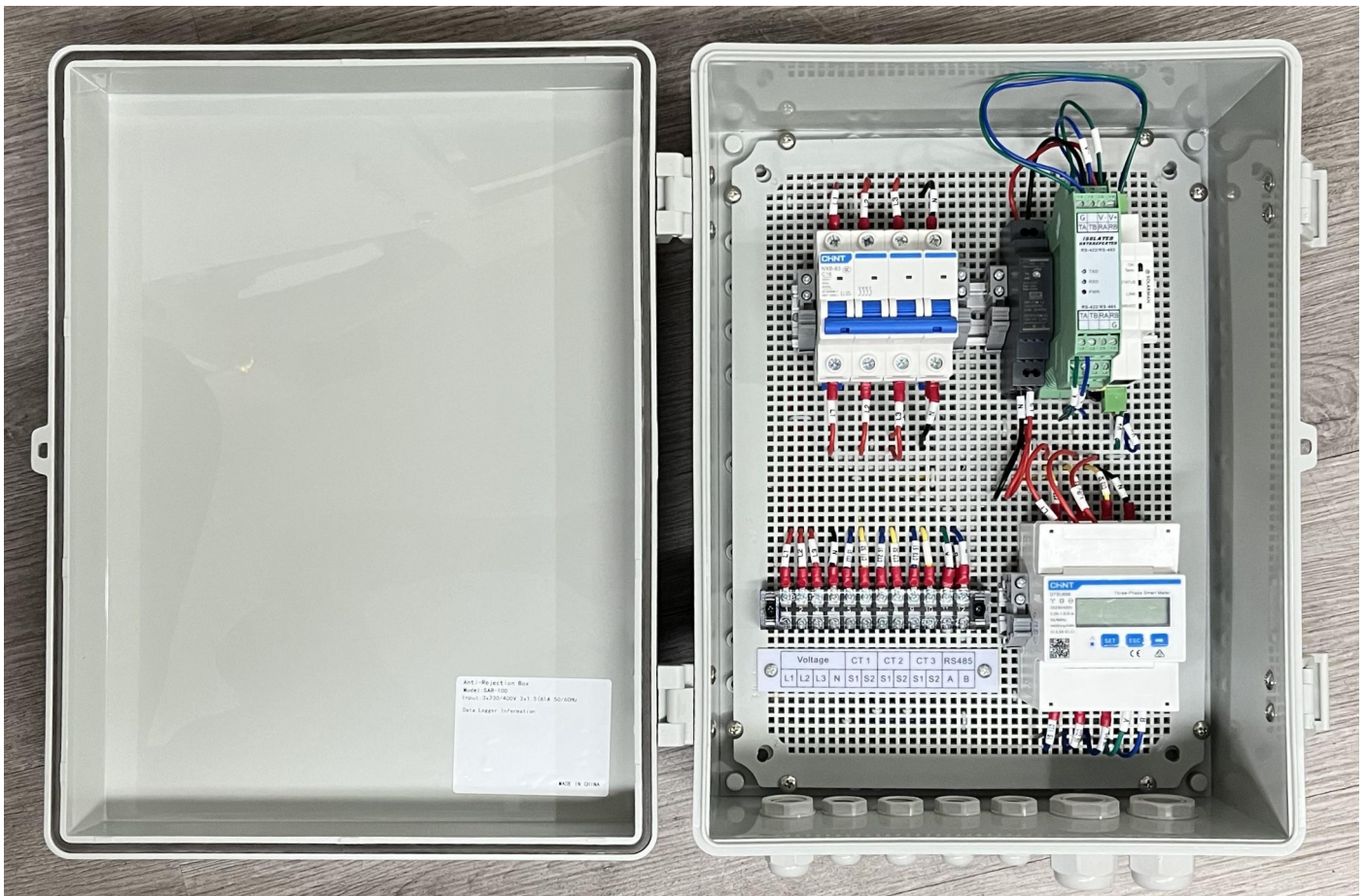
Model:SAR-100-10 (3x400V)

	Parameter
Product Model	SAR-100-5/SAR-100-10 (3x400V)
Remote Communication	2.4G WiFi+Ethernet
Local Communication	RS485
No. of Connections	5/10

Accessing Method	Three-Phase Four-Wire
Working Voltage	3x230/400V 50/60Hz
Working Current	3x1.5(6)A
IP Grade	IP65
Working Temperature	-30°C~+70°C
Working Humidity	5%-95% (No Condensation)
Installation Method	Wall-Hanging
Size	400x300x170mm
Net Weight	3.3kg

Product Pictures

Anti-Reflex Box



Interior View



Bottom View



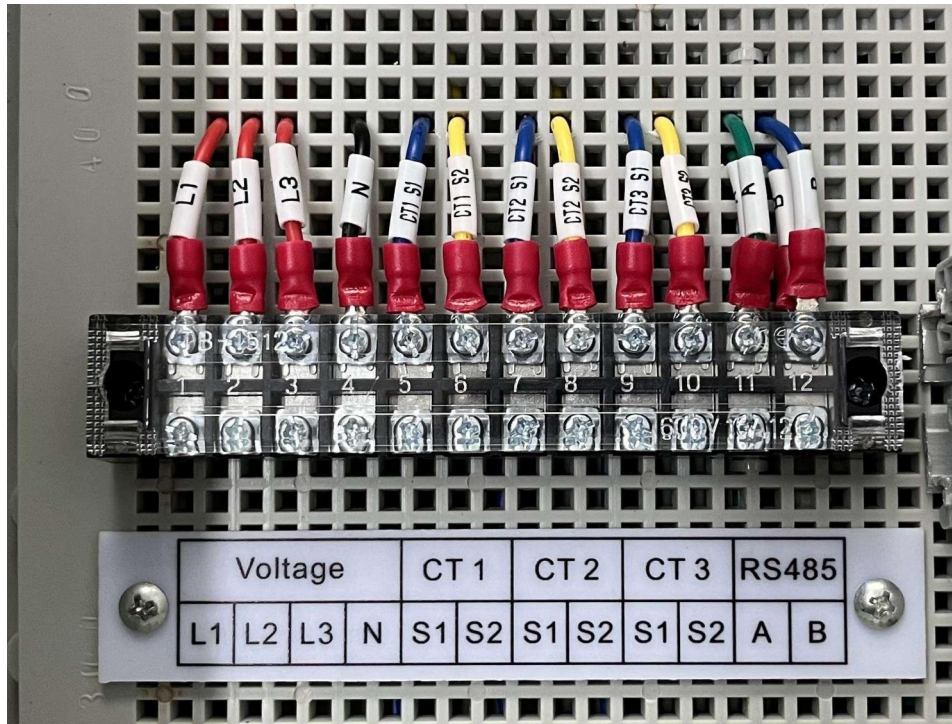
Front View



Back View

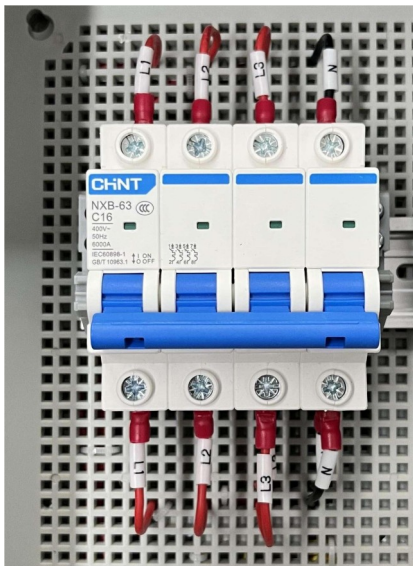


Waterproof plug with a cut

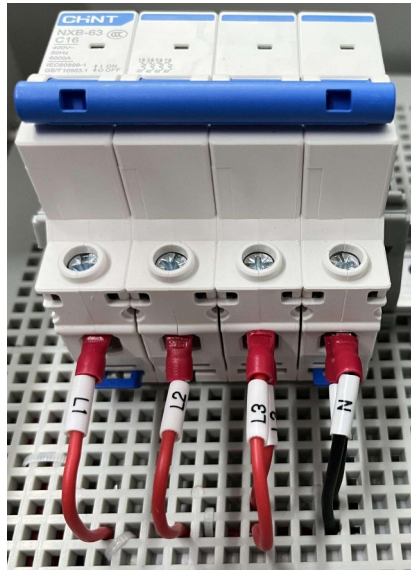


Wiring Connection

Air Switch



Whole View

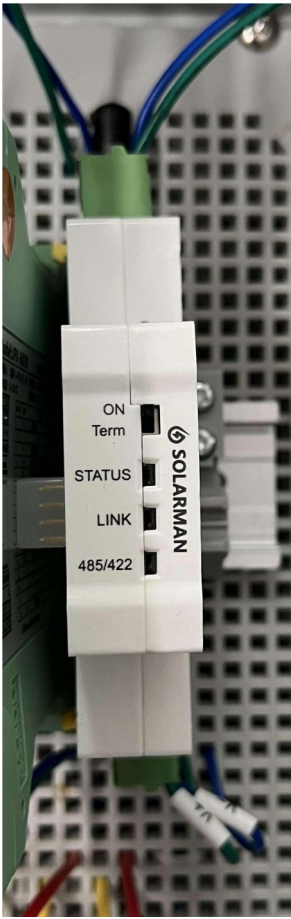


Wiring Connection-Lower Side

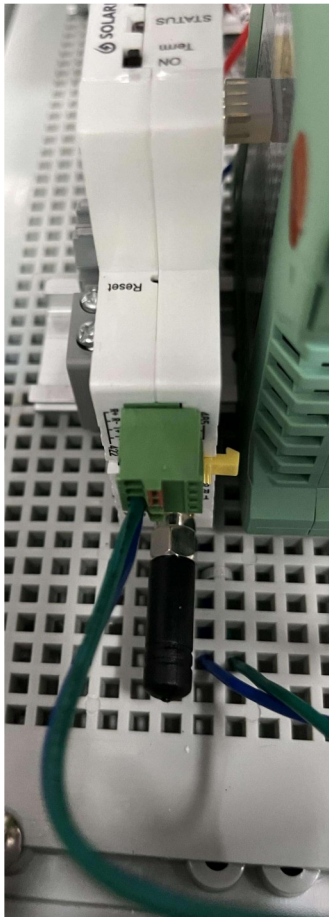


Wiring Connection-Upper Side

DIN-Rail Logger&Power Supply Device



Whole View



Logger RS485 Interface

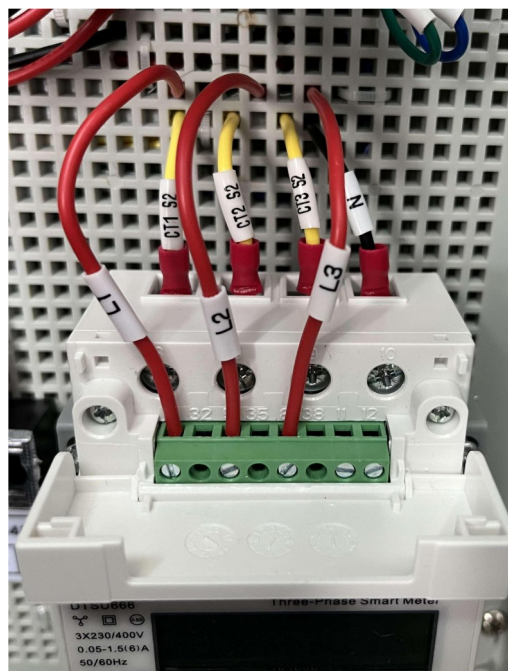


Power Supply Device DC Connection

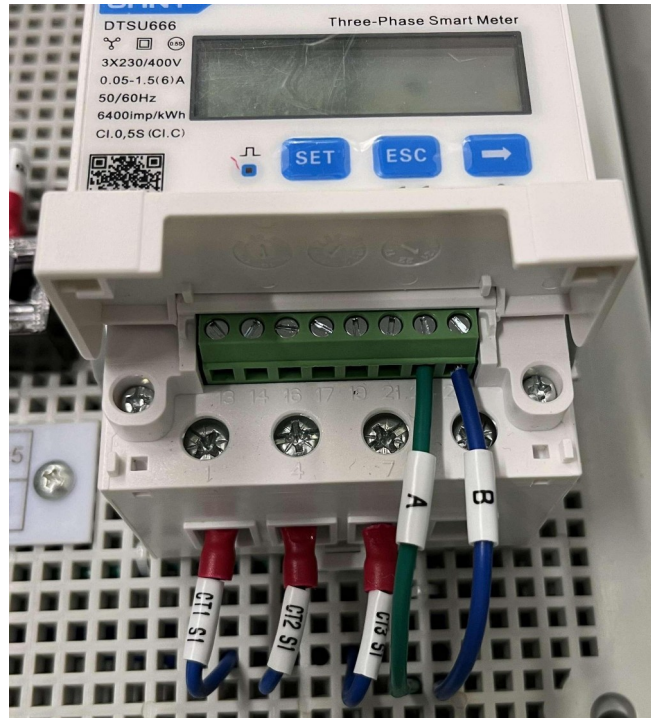
Three-Phase Meter Connection



Whole View



Wiring Connection-Upper Side



Wiring Connection-Lower Side

485 Repeater Connection



485 Repeater Whole View



Wiring Connection-Upper Side

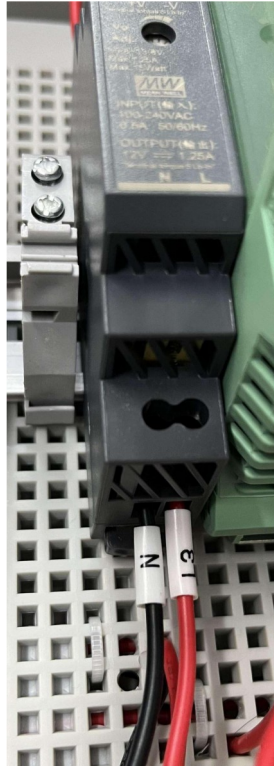


Wiring Connection-Lower Side

Power Connection



Power Supply Whole View



Input End



Output End

Packing

Label Information (Size: 460*390*280/Unit: mm)



Firmware Configuration

1	Domain Name	data1.solarmanpv.com, (solarman 2.0)
2	IP	47.88.8.200 (solarman 2.0)
3	Port No.	10000 (solarman 2.0)
4	APN	---
Data Forwarding		
access1.solarmanpv.com,47.102.152.71 , 10000 (solarman 3.0)		

Product List

No.	Name	Model	Quantity
1	Anti-Reflux Box		1
2	Air Switch	NBX-63 C16	1
3	Three-Phase Meter	DTSU666	1
4	DIN-Rail Logger (WiFi/ETH)	LDW-1	1
5	Installation Hanging Hole	-	4
6	External Antenna	-	1
7	RS485/422 Repeater	JPX6030	1
8	MW Power Supply	HDR-15-12 Input AC85-265V or DC120-370V) Output DC12V	1
9	Expansion Screw	-	4
10	Screw	-	4
11	Repeater resistance		4